

SureFIND Transcriptome PCR Array

For discovering regulators of gene expression

The SureFIND Transcriptome PCR Array identifies which miRNA, protein, or pathway regulates the expression of any gene. In each well of a SureFIND Transcriptome PCR Array, is a unique “transcriptome” or cDNA sample synthesized from cells treated with a unique miRNA mimic, siRNA, or chemical inhibitor. A single qPCR reaction screens 90 different regulators. An expression change in a specific well reveals a transcriptional regulator for the tested gene.

The SureFIND Transcriptome PCR Array provides:

- Rapid discovery of gene expression regulators
- Pre-loaded arrays for simple setup
- Compatibility with SYBR® Green or hydrolysis probe assays
- Included data analysis software

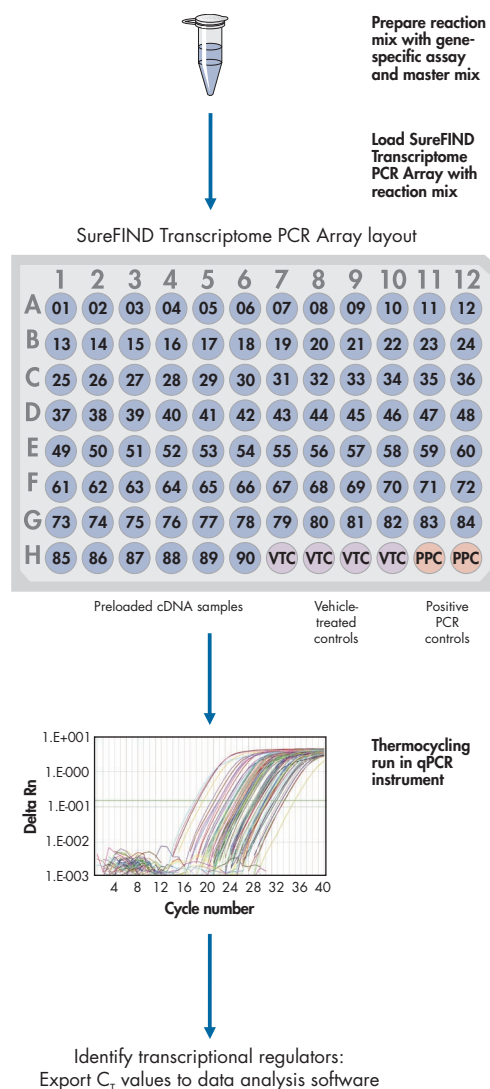
Greater savings and unparalleled ease of use

The SureFIND Transcriptome PCR Array is a single PCR plate with data analysis software. Each well (Figure 1) has a unique cDNA sample synthesized from an experimentally treated cell sample. The cells are treated with a panel of miRNA mimics, chemicals, or siRNAs. By correlation, a treatment that changes the expression of a gene is identified as a candidate regulator. Therefore, the SureFIND Transcriptome PCR Arrays allow you to screen 90 different regulators in a single assay.

To perform the assay, add a gene-specific qPCR assay to every well in the array and run it in a qPCR instrument. SYBR Green and probe-based qPCR assays are compatible with these arrays. C_T values obtained are imported into the software to identify regulators of the selected gene’s expression. The software performs the $\Delta\Delta C_T$ based fold-change calculations and delivers a list of which miRNA, transcription factor, or pathway regulates the tested gene.

Figure 1. Protocol overview. SureFIND Transcriptome PCR Arrays preloaded with cDNA synthesized from 90 different experimentally treated cell samples. Each unique cDNA sample is derived from cells treated with a miRNA mimic, chemical, or siRNA. After a qPCR reaction for a gene of interest, the software identifies which miRNA, protein, or pathway regulates that gene.

Protocol overview



Application experiment

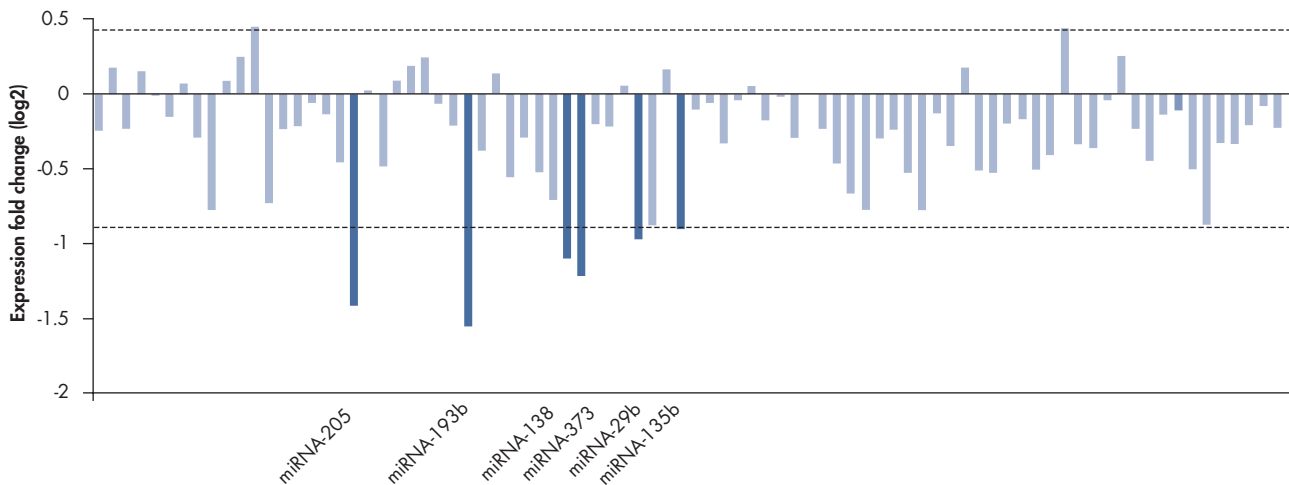


Figure 2. SureFIND Transcriptome PCR Arrays identify miRNA regulators of INPPL1 expression. PCR reactions using primers for INPPL1 (SHIP2) and a normalization gene were performed using the SureFIND Cancer miRNA Transcriptome PCR Array. The SureFIND Cancer miRNA Transcriptome PCR Array contains cDNA samples derived from HeLa cells treated with 90 different cancer-associated miRNA mimics. The software identified miRNA-205, -193b, -138, -373, -29b, and -135b as negative regulators of INPPL1 expression.

Ordering Information

Product	Contents	Cat. no.
<u>SureFIND miRNA Transcriptome PCR Array</u>	For identifying miRNAs that regulate the expression of any gene with cDNAs derived from HeLa cells treated with miRNA mimics.	<u>336611</u>
<u>SureFIND Pathway Transcriptome PCR Array</u>	For identifying pathways that regulate the expression of any gene with cDNAs derived from HEK293, HeLa or MCF-7 cells treated with chemical inhibitors.	<u>336611</u>
<u>SureFIND Transcription Factor Transcriptome PCR Array</u>	For identifying transcription factors that regulate the expression of any gene with cDNAs derived from MCF-7 cells treated with siRNAs.	<u>336611</u>

For up-to-date licensing information and product-specific disclaimers, see the respective handbook or user manual. User manuals are available at www.SABiosciences.com or can be requested from QIAGEN Technical Services or your local distributor. These kits are intended for molecular biology applications. Not intended for diagnostic purposes.

Trademarks: QIAGEN® (QIAGEN Group); SYBR® (Molecular Probes Inc.).
1066551 11/2010 © 2010 QIAGEN, all rights reserved.

www.SABiosciences.com

Australia = 1-800-243-066
Austria = 00800-22448000
Belgium = 00800-22448000
Brazil = 0800-557779

Canada = 0800-362-7737
China = 0800-988-0325
Denmark = 00800-22448000
Finland = 00800-22448000
France = 00800-22448000
Germany = 00800-22448000

Ireland = 00800-22448000
Italy = 00800-22448000
Japan = 03-5632-9610
Luxembourg = 00800-22448000
Mexico = 01-800-7742-436
Netherlands = 00800-22448000

Norway = 00800-22448000
Singapore = 1800-742-4368
Sweden = 00800-22448000
Switzerland = 00800-22448000
UK = 00800-22448000
USA = 1-888-503-3187

